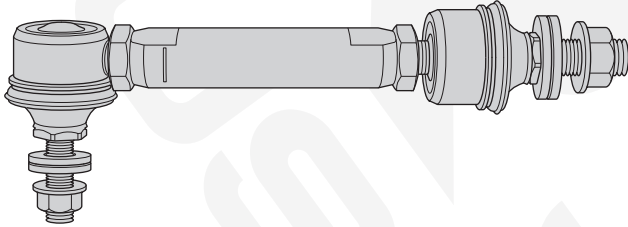
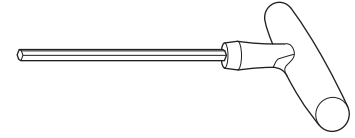


**COMPONENTS**

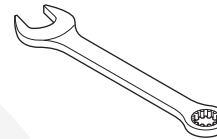
QTY: 2  
SWAY BAR END LINKS



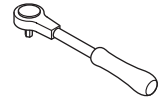
**TOOLS REQUIRED**



6MM ALLEN KEY



OPEN END WRENCH  
12mm, 16mm, 17mm and 19mm



TORQUE  
WRENCH

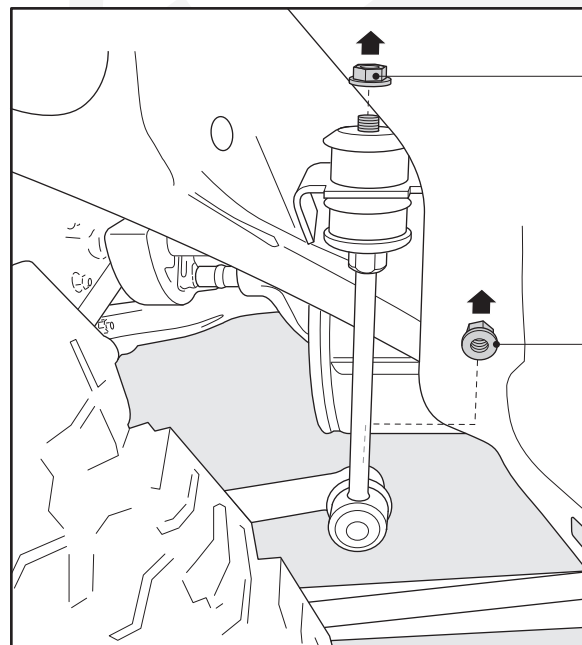
**INSTALLATION NOTES**

Remove all contents from the package and inspect for any damage. Also, verify that all components listed above are included before you begin installation. If anything is missing or damaged please contact us at [customerservice@cyc-engineering.com](mailto:customerservice@cyc-engineering.com)

Read through entire installation manual and installation drawings to ensure that you understand all of the components before proceeding with installation.

1. Use properly rated jack stands to support the vehicle, chock the front tires to ensure no movement while working under your vehicle. Once the rear of the vehicle is off the ground and secured, remove the rear wheels.
2. Start on driver's side, remove the factory sway bar end link by removing the lower nut using a 17mm socket then remove the upper nut using a 12mm socket.

**Existing OEM End Link Removal**

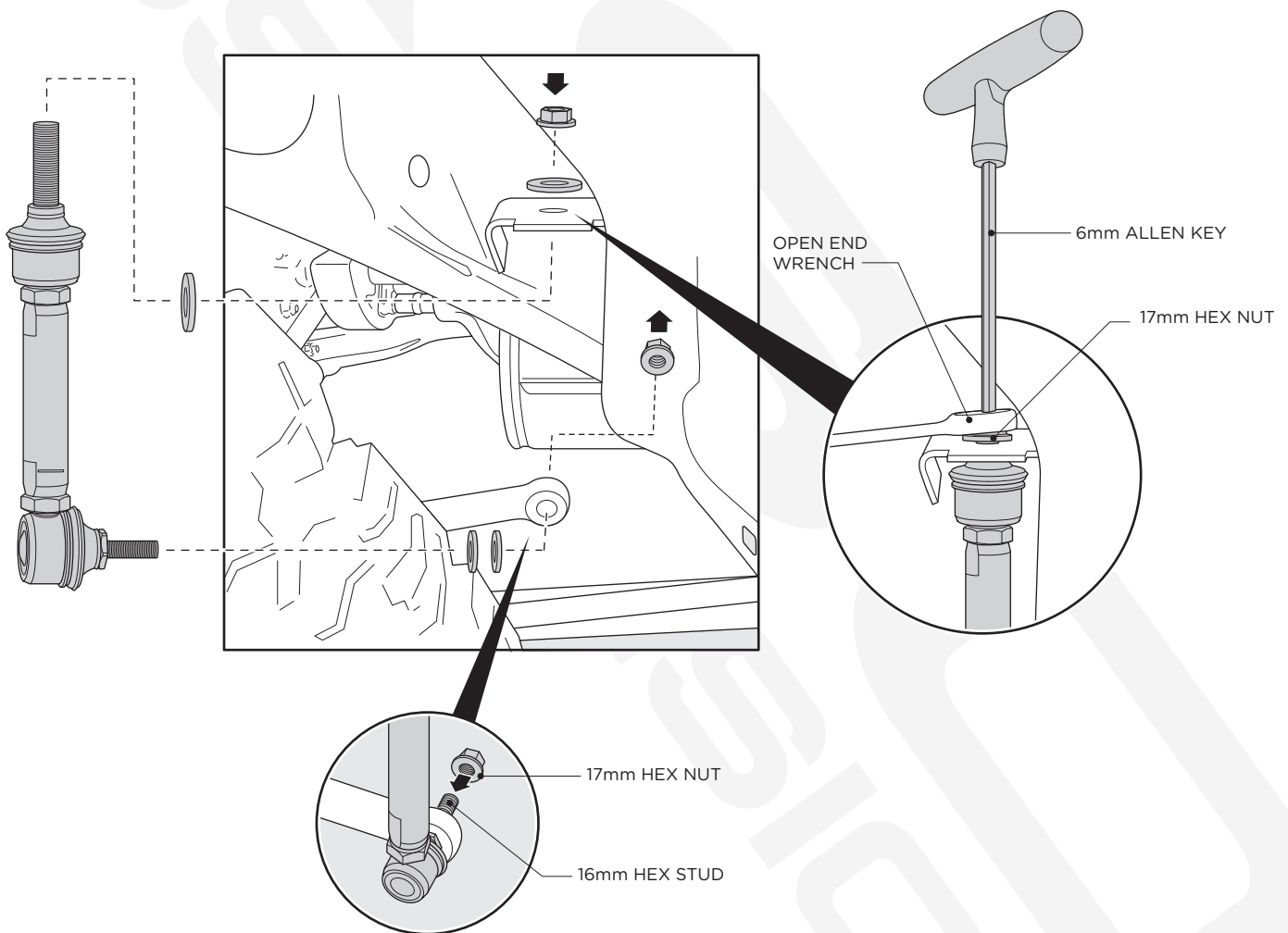


12mm HEX NUT  
REMOVE USING  
SOCKET WRENCH

17mm HEX NUT  
REMOVE USING  
SOCKET WRENCH

- 3.** Extend your new RSO end links to the length of the factory end links you removed as a starting point for adjustments. Install the RSO end link to the upper frame mount using the two large flat washers and 17mm hex nut provided with the kit. Use a 6mm allen key to keep the stud from spinning and torque the 17mm hex nut to 60ft/lbs. Install the lower nut to the sway bar using two flat washers and the 17mm hex nut provided with the kit. Use a 6mm allen key to keep the stud from spinning loosely secure the hex nut, do not fully tighten the lower hex nut until the vehicle is under it's own weight to prevent preloading the sway bar.

### New RSO End Link Installation



- 4.** Install wheels and tires and lower vehicle so the full weight is back on the sway bar. Adjust the end links by rotating the center section shorter or longer until the sway bar is parallel with the frame. Once the end links are properly adjusted tighten the 19mm jam nuts while holding the end link body with a 16mm wrench. Torque the lower 17mm hex nut to 55ft/lbs while using 16mm wrench to hold the hex stud.