

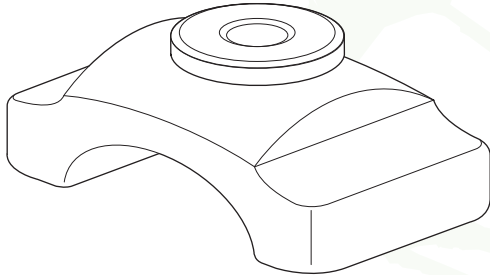
STEERING STABILIZER RELOCATION BRACKET INSTALL

SKU# 170107-443901

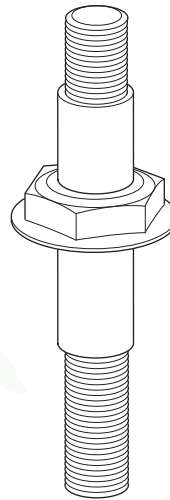
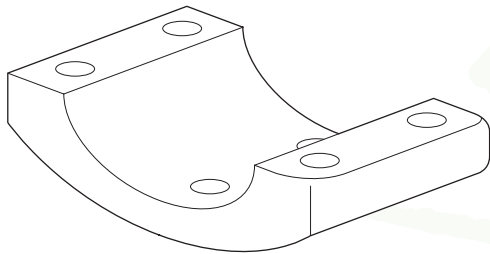


COMPONENTS

TOOLS REQUIRED



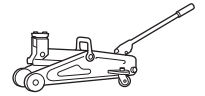
Qty: 1
Steering Stabilizer
Bracket



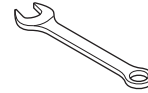
Qty: 1
Steering
Stabilizer
Relocation
Mounting Stud



2.5mm
Allen Wrench



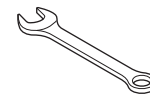
Jack



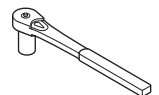
1/2" Open
End Wrench



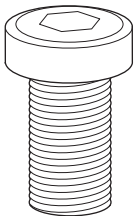
Jack Stands



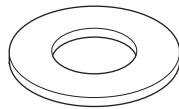
7/16" Open
End Wrench



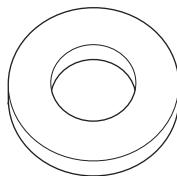
21mm Socket



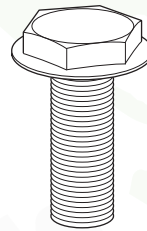
Qty: 4
Socket Head
Cap Screw



Qty: 1
7/16" Washer



Qty: 2
1/2" Washer



Qty: 1
1/2" Hex
Head Bolt

INSTALLATION NOTES

NOTE: The factory steering stabilizer clamp will not fit on your new HD tie rod. The supplied 1-5/8" steering stabilizer clamp will be required.

Remove all contents from the package and inspect for any damage. Also, verify that all components listed above are included before you begin installation. If anything is missing or damaged please contact us at customerservice@raptorseries.com

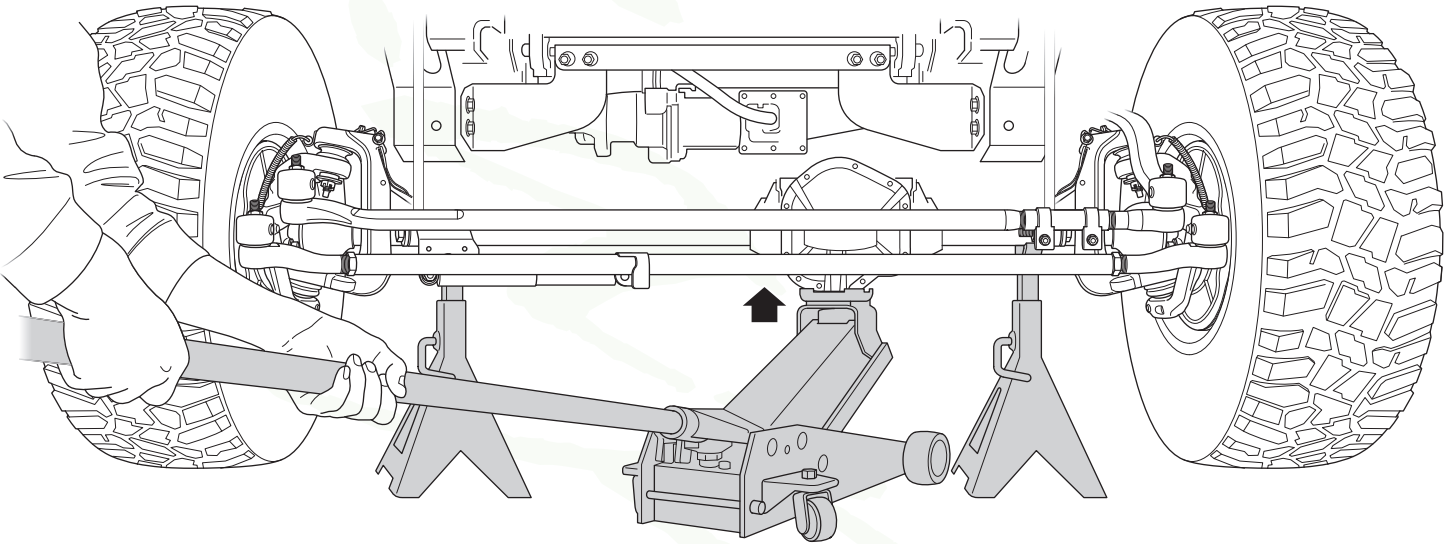
Read through entire installation manual and installation drawings to ensure that you understand all of the components before proceeding with installation.

STEERING STABILIZER RELOCATION BRACKET INSTALL

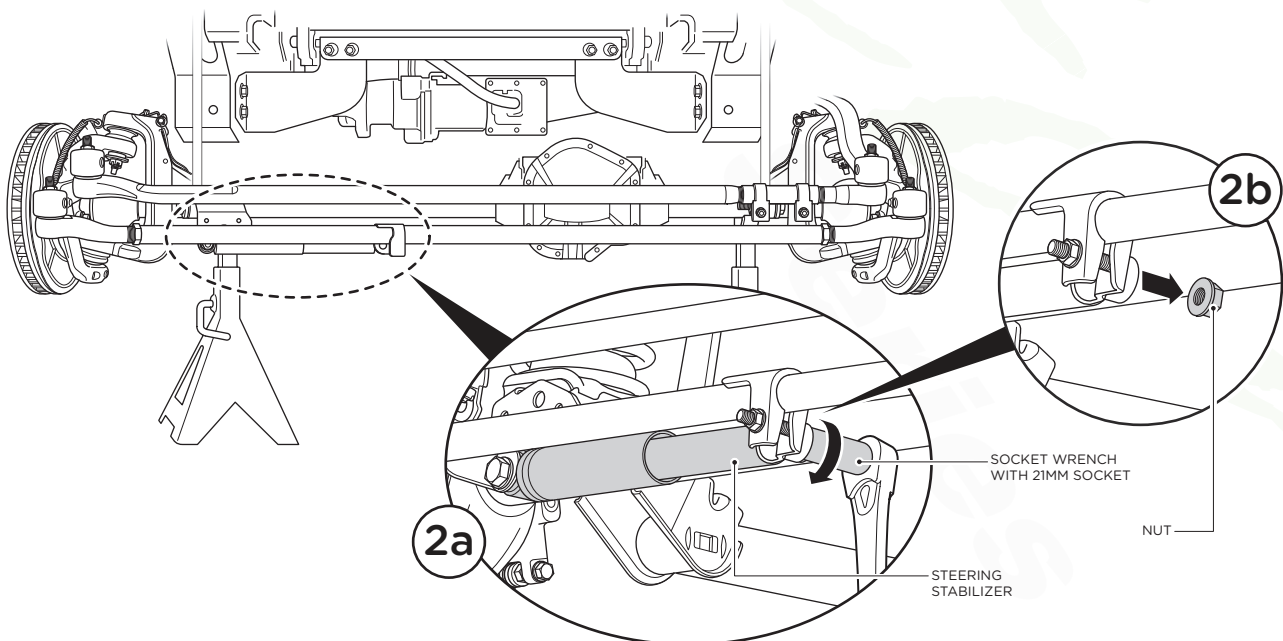
SKU# 170107-443901

Raptor
Series

1. Chock your rear tires and then raise the front tires off the ground using a jack. Remove the front tires.



2. Remove Steering Stabilizer by first loosening the Nut using a 21MM socket (2a) and then removing the Nut (2b). Once Nut is removed, wiggle the Steering Stabilizer back and forth and pull from housing. Once the Steering Stabilizer is removed from housing, swing the Steering Stabilizer downward.



STEERING STABILIZER RELOCATION BRACKET INSTALL

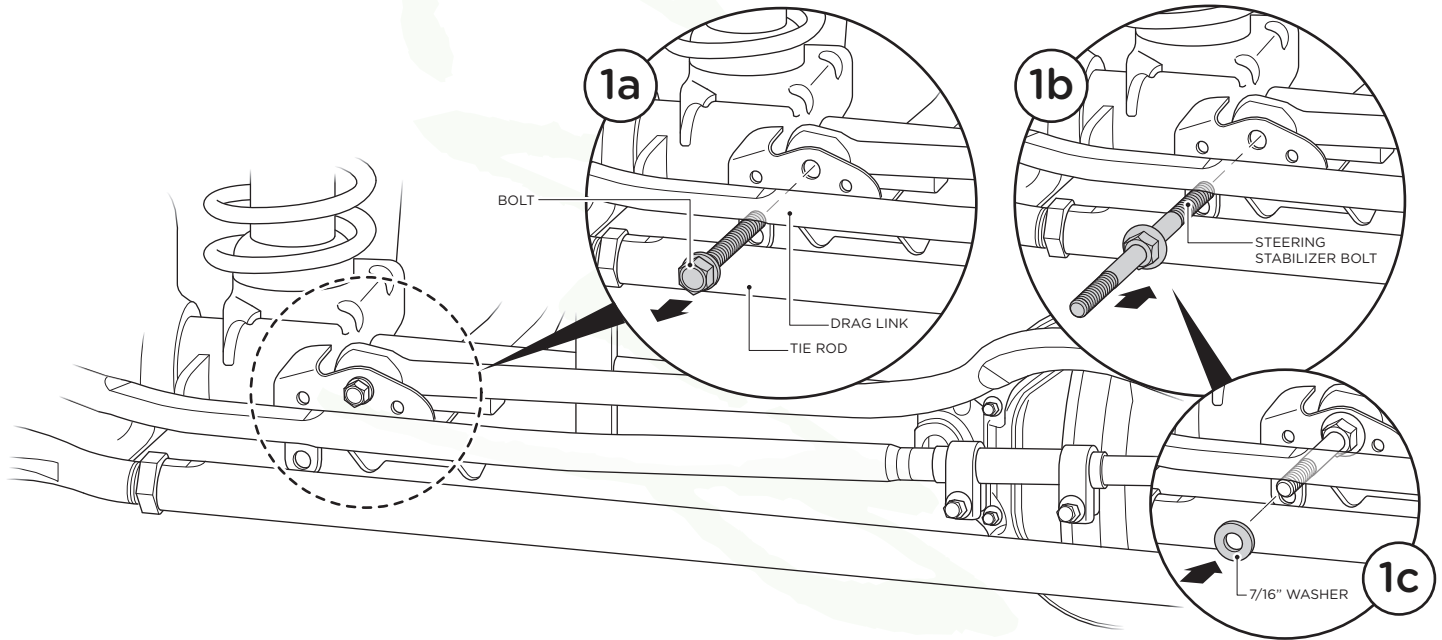
SKU# 170107-443901

Raptor
Series

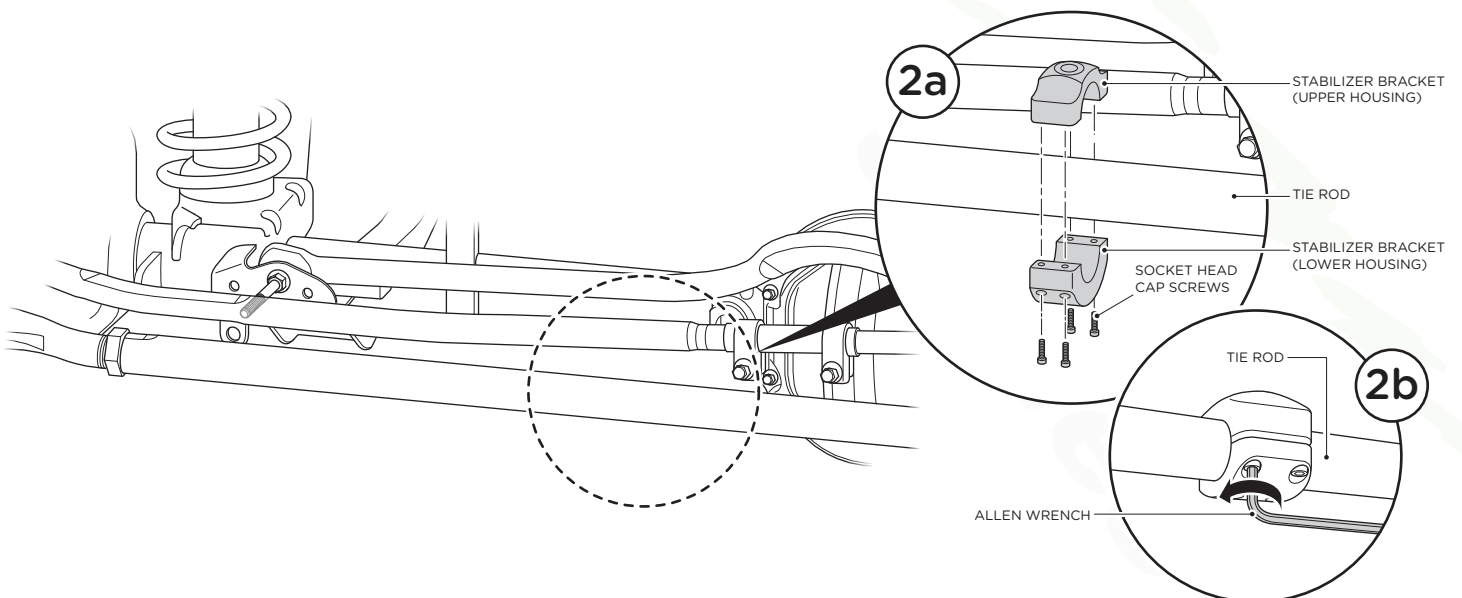
1. Reposition existing Steering stabilizer or install new Steering Stabilizer.

Note: If you prefer to keep the stabilizer in your factory location simply rotate the bracket so the hole is faced down.

Remove existing Bolt (1a), then install Steering Stabilizer Bolt (1b) and 7/16" Washer (1c).



2. Install Steering Stabilizer Bracket onto the Tie Rod using 4 Socket Head Cap Screws (2a). Tighten Socket Head Cap Screws using an Allen wrench, making sure not to fully tighten at this point (2b).



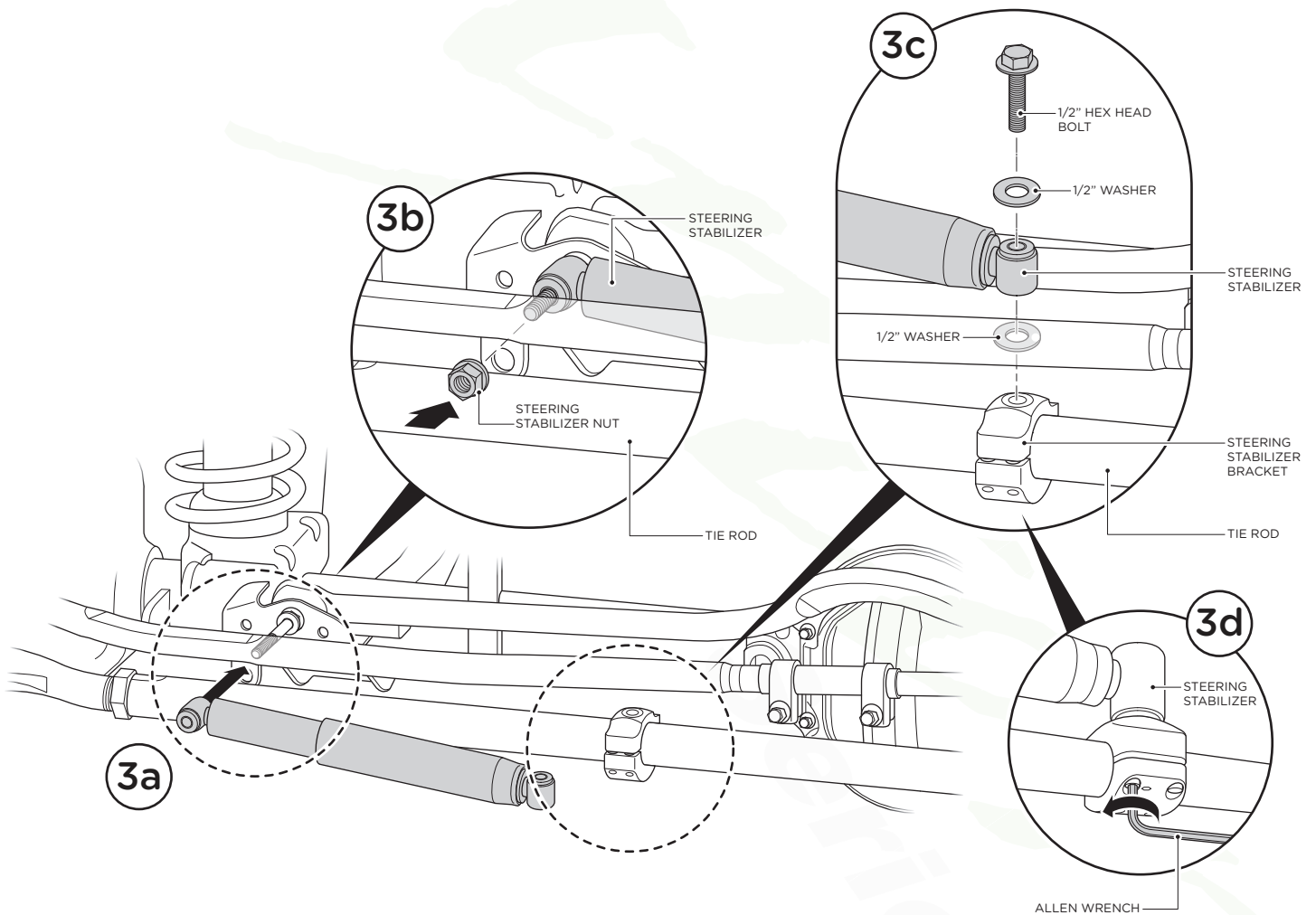
STEERING STABILIZER RELOCATION BRACKET INSTALL

SKU# 170107-443901

Raptor
Series

3. Place one end of Steering Stabilizer onto the Steering Stabilizer Bolt (3a) and secure using Steering Stabilizer Nut (3b). Secure other end of Steering Stabilizer to top of Steering Stabilizer Bracket and secure using the 1/2" Hex Head Bolt and two 1/2" Washers. (3c).

Reinstall tires and wheels. Then locate the screws on the Steering Stabilizer Bracket and fully tighten using an Allen Wrench (3d).



REV 1