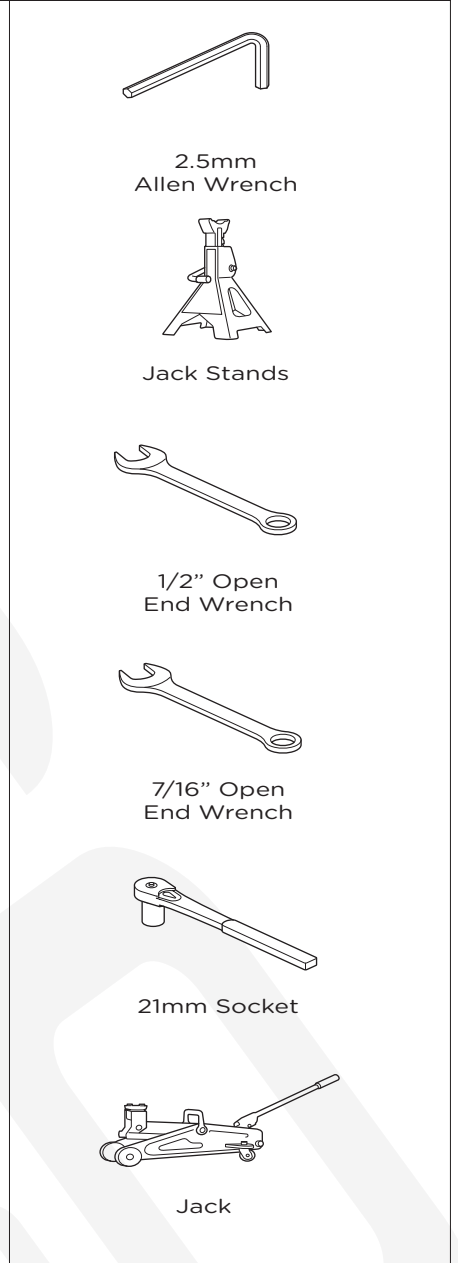
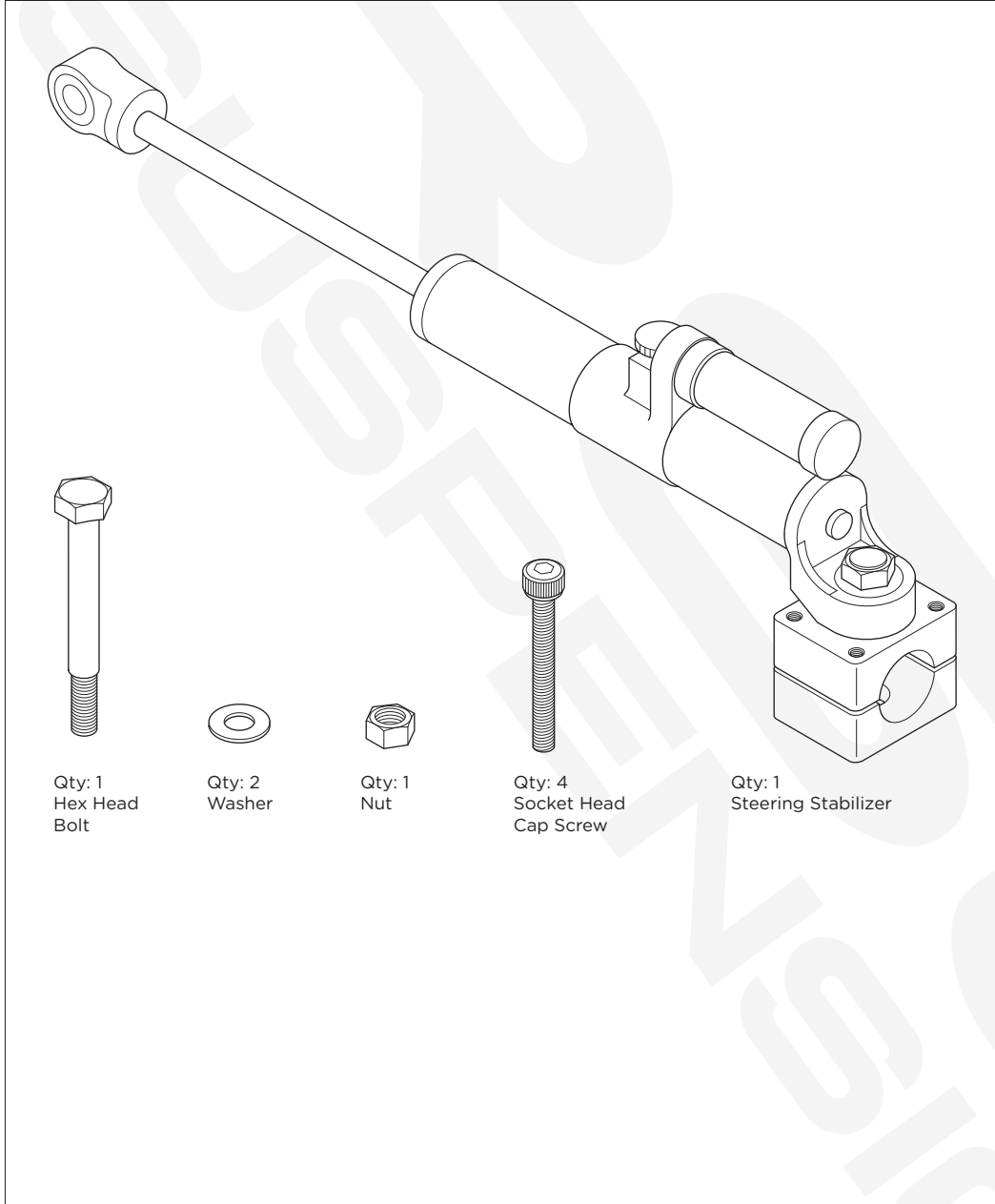


COMPONENTS **TOOLS REQUIRED**



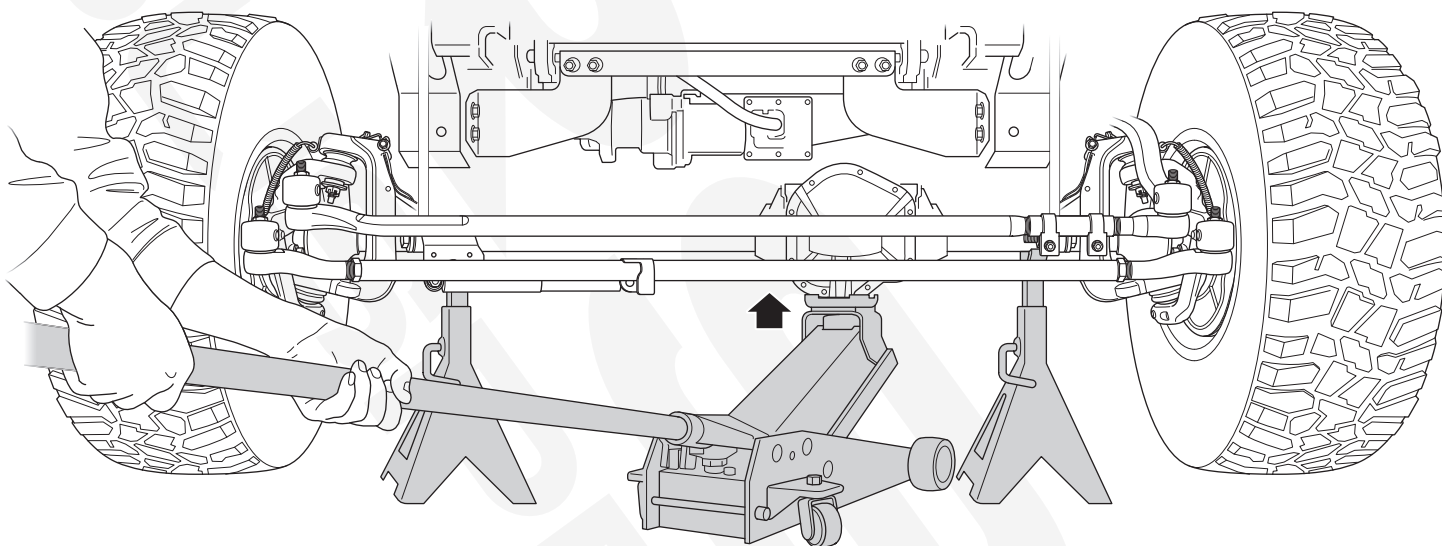
INSTALLATION NOTES

NOTE: The included Steering Stabilizer clamp will not fit on an aftermarket HD 1 5/8" Tie Rod.

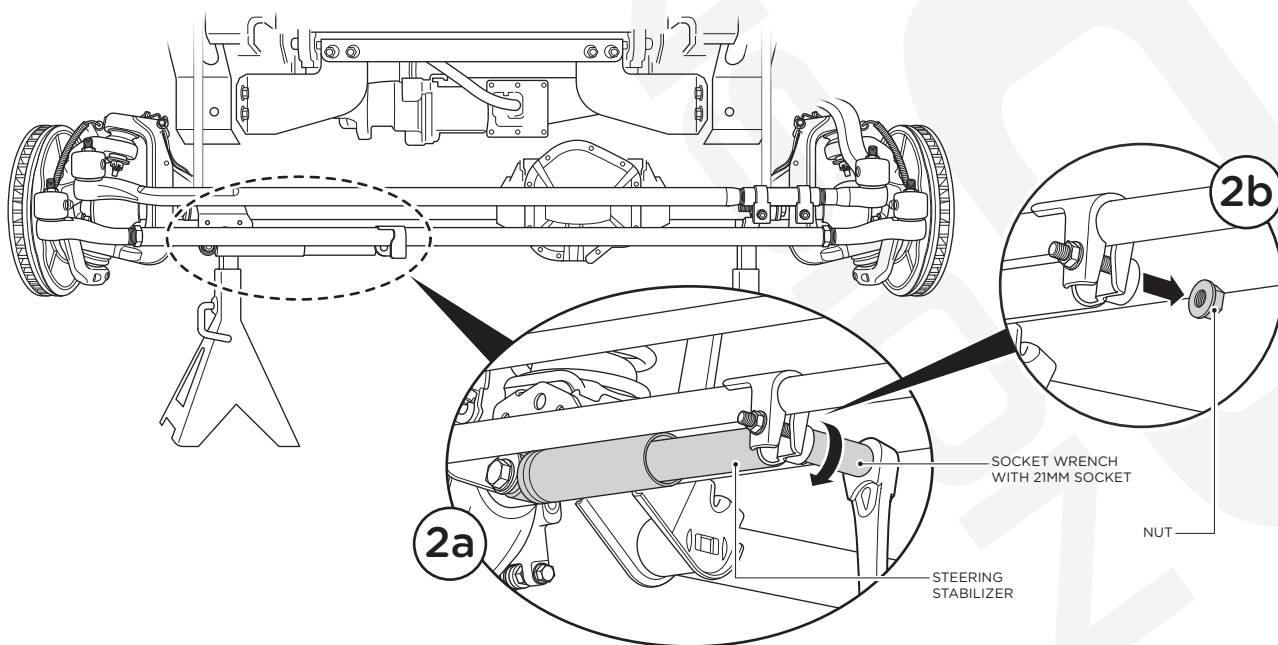
Remove all contents from the package and inspect for any damage. Also, verify that all components listed above are included before you begin installation. If anything is missing or damaged please contact us at customerservice@raptorseries.com

Read through entire installation manual and installation drawings to ensure that you understand all of the components before proceeding with installation.

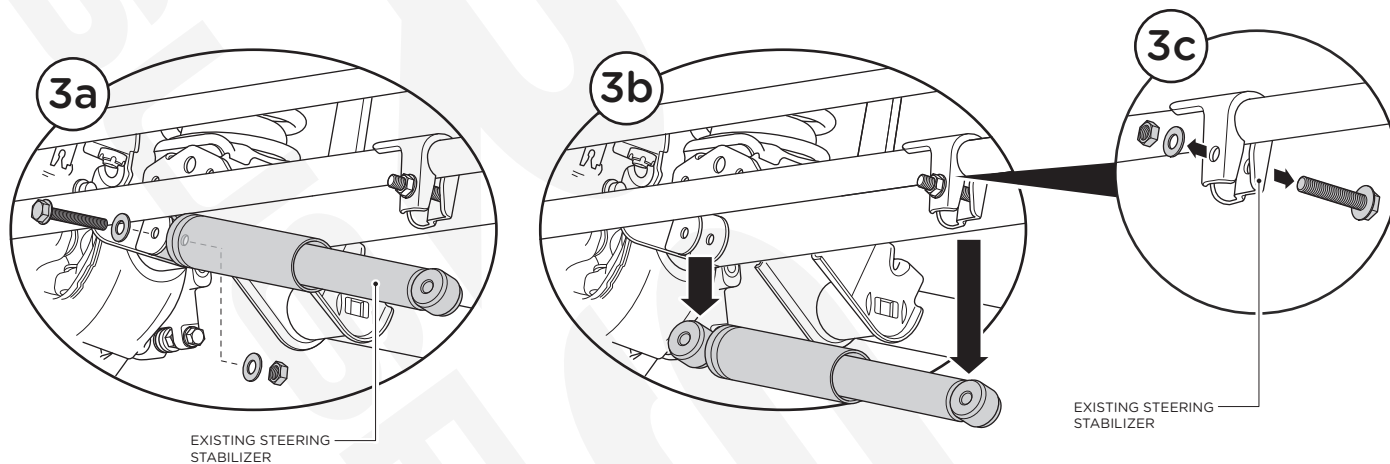
1. Chock your rear tires and then raise the front tires off the ground using a jack. Remove the front tires.



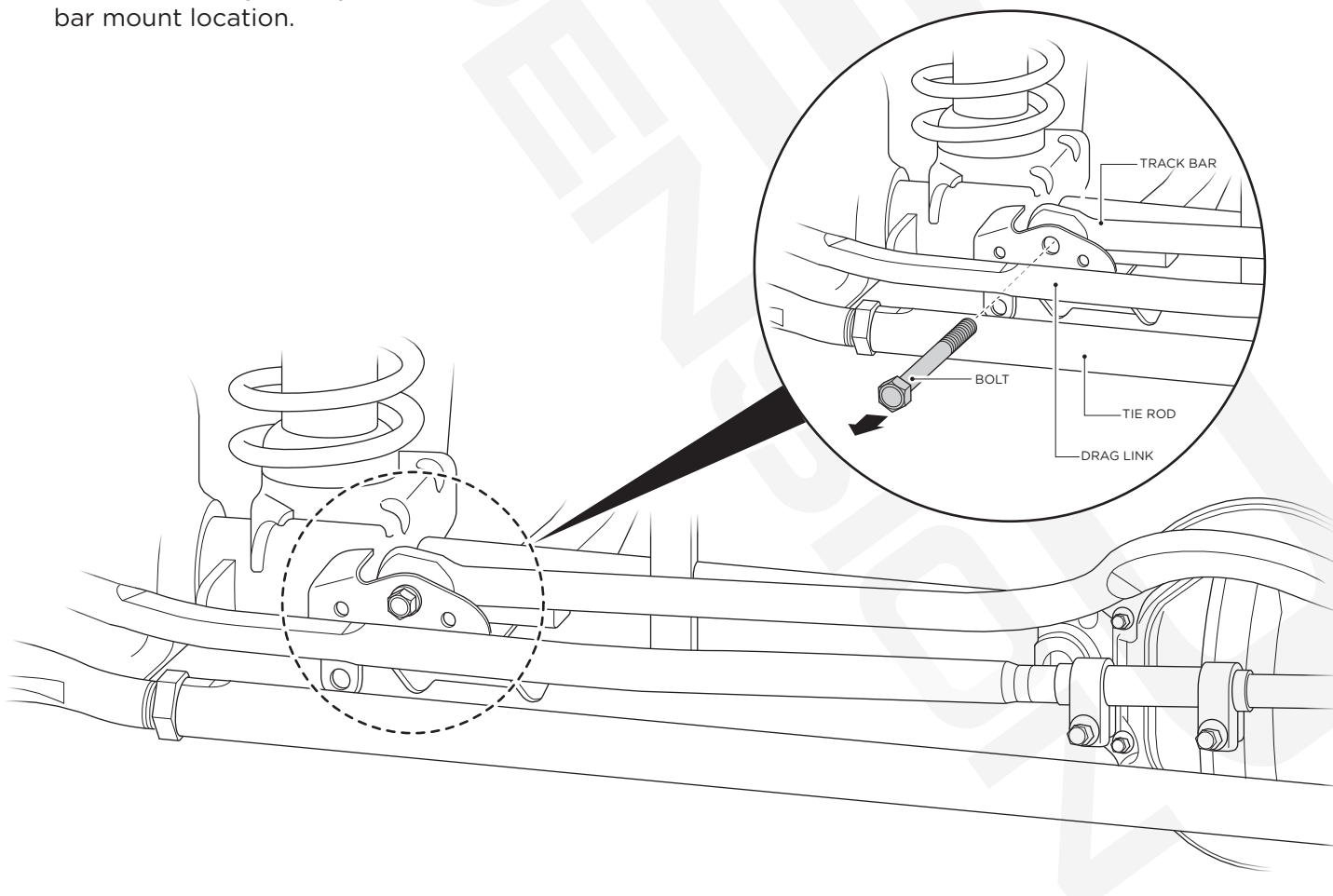
2. Remove Existing Steering Stabilizer by first loosening the Nut using a 21MM socket (2a) and then removing the Nut (2b). Swing the Existing Steering Stabilizer downward.



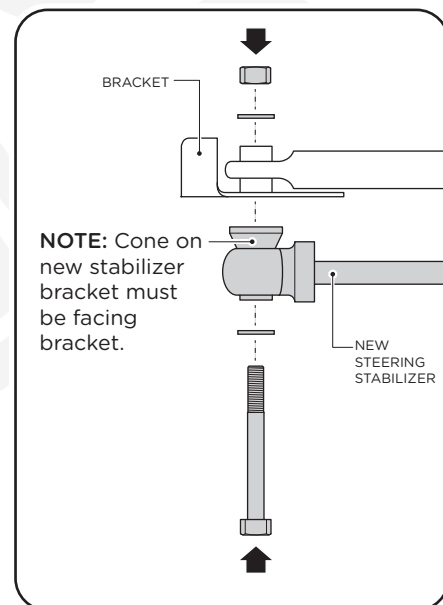
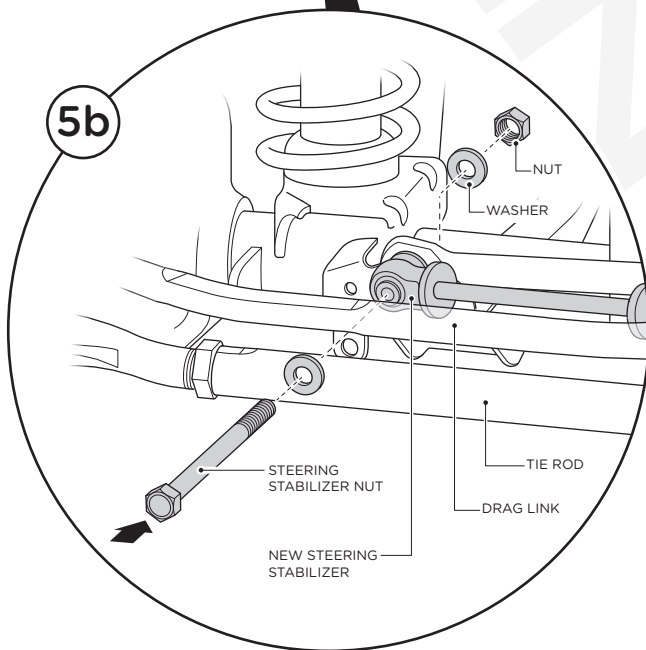
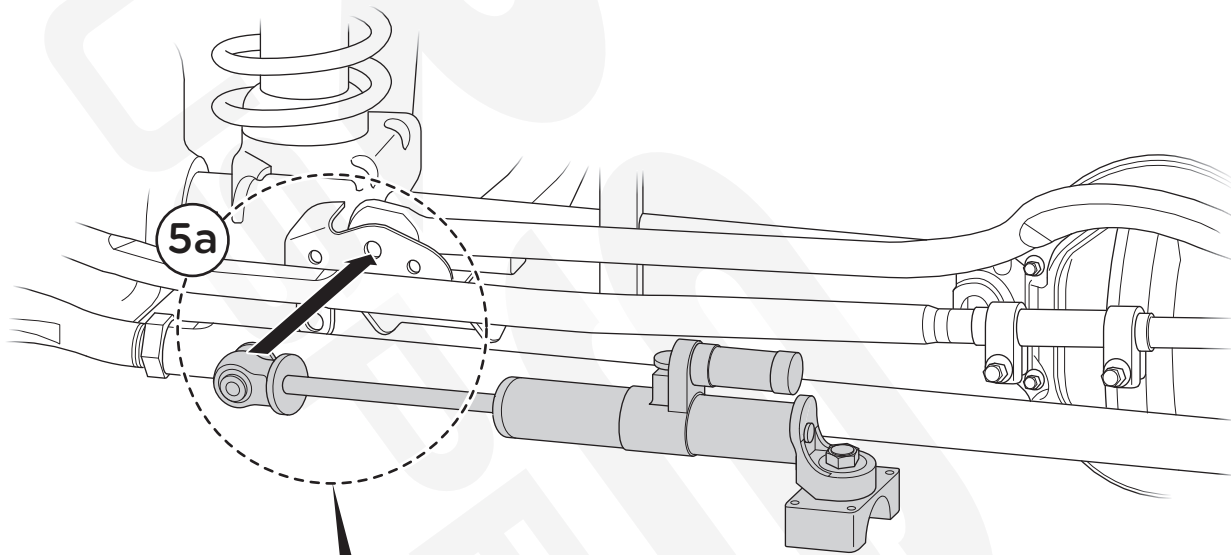
- 3.** At other end of Existing Steering Stabilizer, remove Nut, Bolt and 2 Washers using a 21MM socket (3a). Remove the Existing Steering Stabilizer (3b). Remove Existing Steering Stabilizer Bracket from Tie Rod by removing 1 Nut, 1 Washer and 1 Bolt (3c).



- 4.** Remove existing factory bolt from lower track bar mount location.



- 5.** Align end of New Steering Stabilizer with Bracket (5a) and secure using 1 Hex Head Bolt, 2 Washers and 1 Steering Stabilizer Nut (5b).



- 6.** Position Bracket End of New Steering Stabilizer onto top of Tie Rod (6a). Secure Bracket End to Tie Rod using 4 Socket Head Cap Screws (6b). Tighten Socket Head Cap Screws using an Allen wrench, making sure not to fully tighten at this point.

Reinstall tires and wheels. Adjust your steering wheel by adjusting the collar on your new drag link until the wheels are centered while your tires are pointed straight. Then locate the screws on the Steering Stabilizer Bracket and fully tighten using an Allen Wrench.

We now recommend you get a professional alignment.

