

INSTALLATION NOTES

PROFESSIONAL INSTALLATION IS STRONGLY RECOMMENDED!

If you intend to do this installation yourself, please use extreme caution when working under a vehicle that is supported with jack stands. Serious injury or death can occur.

Read through entire installation manual to ensure that you understand all of the steps before proceeding with installation. If these instructions are not properly followed, severe frame, suspension, and tire damage may occur. Product failure or vehicle damage caused by improper installation will not be covered under warranty!

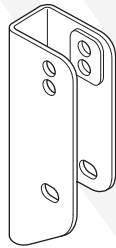
Remove all contents from the package and inspect for any damage. Also, verify that all components listed are included before you begin installation. If anything is missing or damaged please contact us at customerservice@cyc-engineering.com - IMPORTANT: DO NOT INSTALL DAMAGED PARTS!

This bracket requires at least a 2" Bump stop Spacer which will prevent damage to the body during suspension cycle.

COMPONENTS

TOOLS REQUIRED

Qty 2: Rear Track Bar Bracket



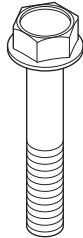
21mm Socket/Wrench

18mm Socket/Wrench

Center Punch

Drill

Qty 2: M14 x 2.0 x 80mm
Hex Flange Bolt

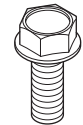


1/2" Drill Bit

Pilot Drill Bit

Torque Wrench

Qty 2: M12 x 1.75 x 25mm
Hex Flange Bolt



Qty 2: M14 x 2.0 Flange
Top Lock Nut



Qty 2: M12 x 1.75 Flange
Top Lock Nut



Qty 1: Spacer



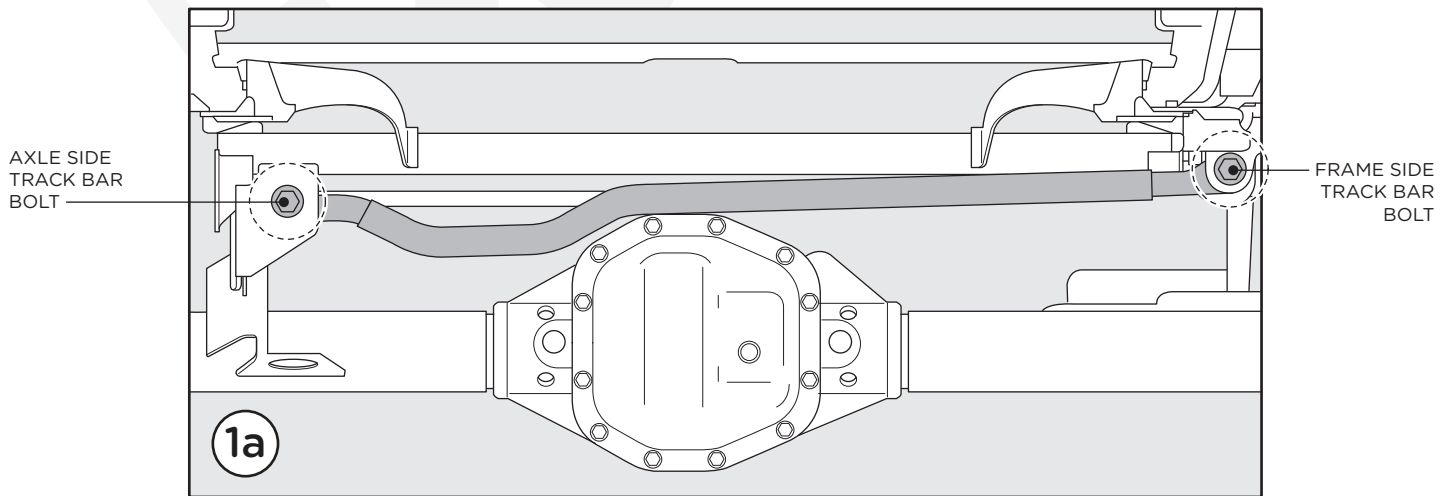
REAR TRACK BAR BRACKET KIT

SKU# 170118-422100

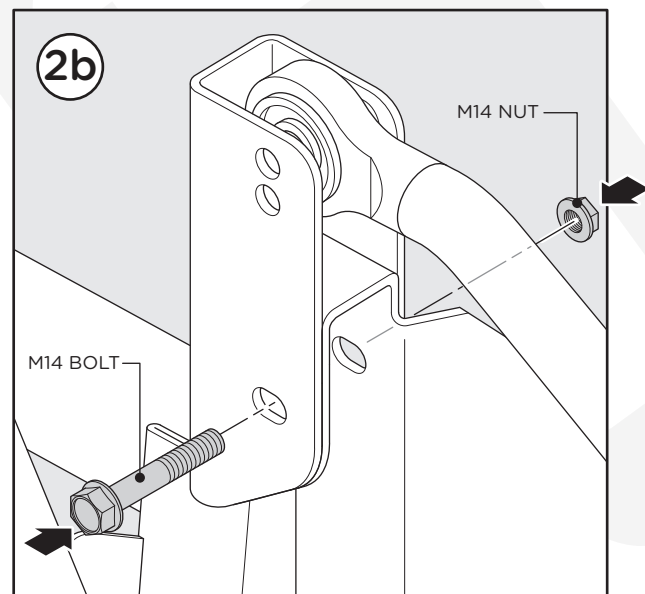
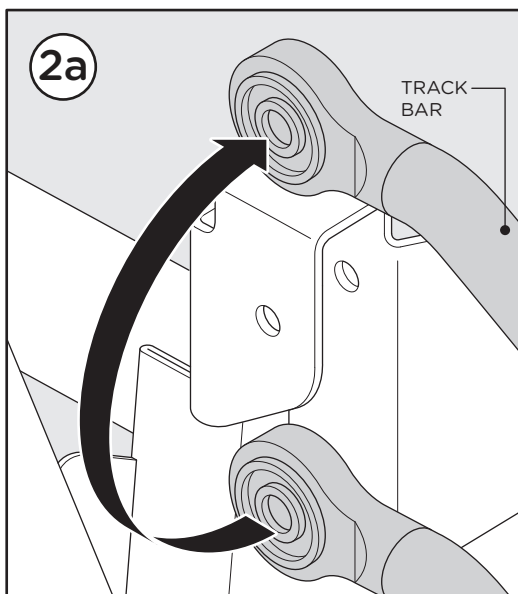
RSO SUSPENSION

NOTE: This bracket can be installed with the Jeep on the ground and with the wheels installed. If installed with the Jeep lifted DO NOT torque track bar bolts until Jeep is back on the ground and at ride height.

1. Loosen the frame side track bar bolt using a 21mm socket, do not remove bolt. Remove the axle side track bar bolt. (1a)



2. Place the track bar on top of the track bar mount (2a). Temporarily install track bar relocation bracket onto the factory track bar mount with provided M14 bolt and nut (2b).

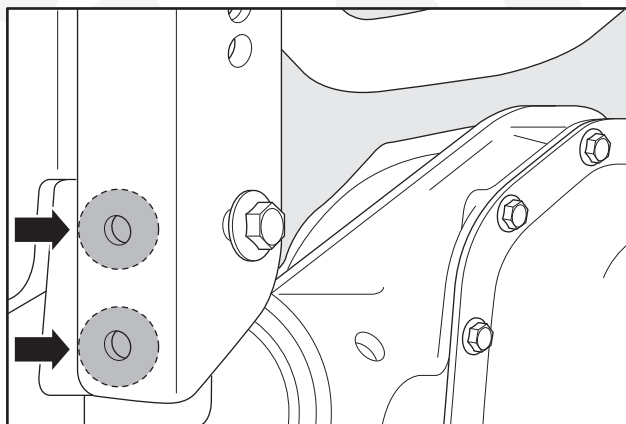


REAR TRACK BAR BRACKET KIT

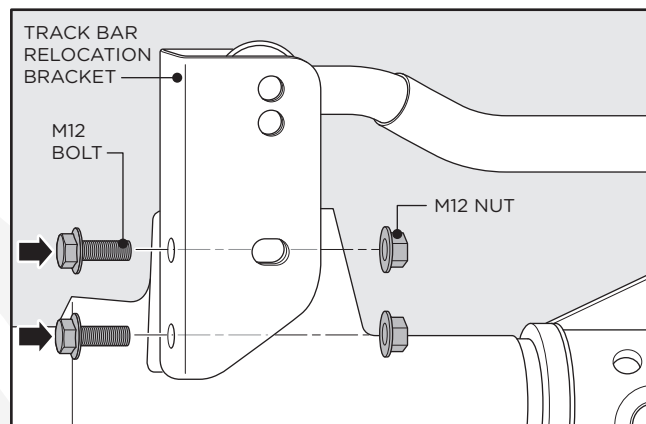
SKU# 170118-422100

RSO SUSPENSION

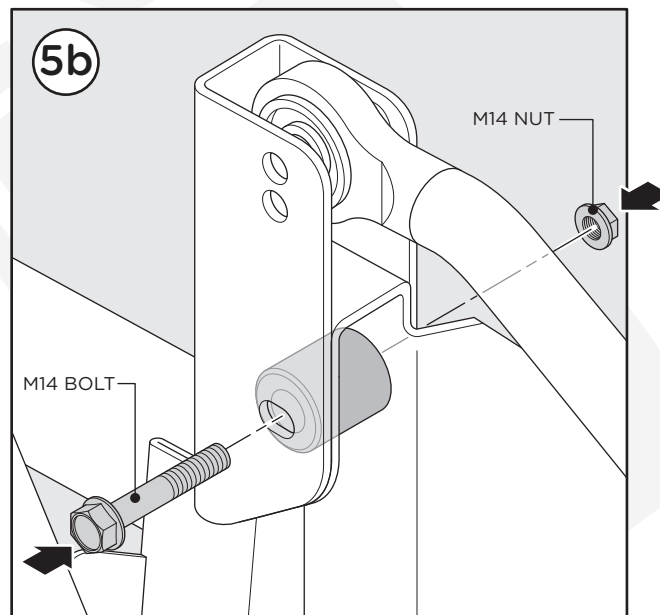
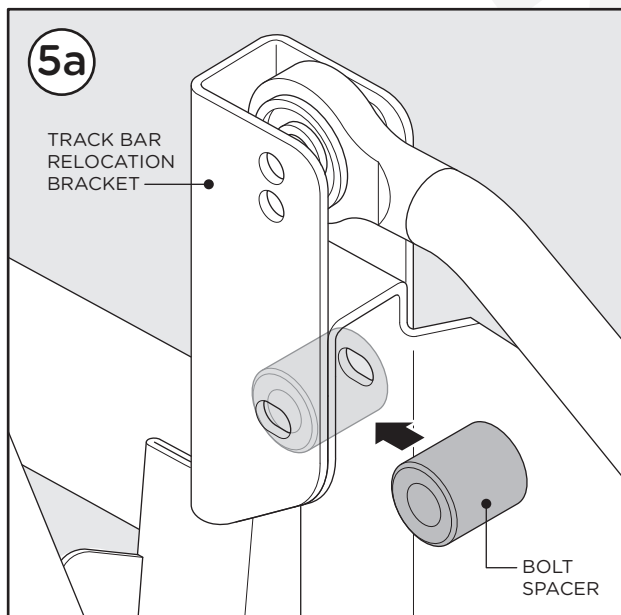
3. Mark the location for both holes to be drilled. Remove the bracket and drill a 1/2" hole in both locations. **TIP:** For the best results use a center punch and drill a pilot hole.



4. Install track bar bracket with the provided M12 bolt and M12 nut into the holes just drilled. Do not tighten bolts.



5. Install provided M14 bolt, spacer, and M14 nut into track bar relocation bracket and mount. Torque provided M12 bolts to 95 ft-lbs. Torque provided M14 bolt to 150 ft-lbs.



REAR TRACK BAR BRACKET KIT

SKU# 170118-422100

RSO SUSPENSION

6. Install track bar onto relocation bracket using provided M14 bolt and nut (6a). The lower position is for 2.5 - 3" lifts and upper position is for 4" lifts (6b). Torque provided M14 bolt to 150 ft-lbs. Torque frame side track bar bolt to factory recommended specs. Install is now Complete.

Maintenance Note: After the first 100 miles and every 3,000 miles after that, re-torque all the suspension components and bolts.

