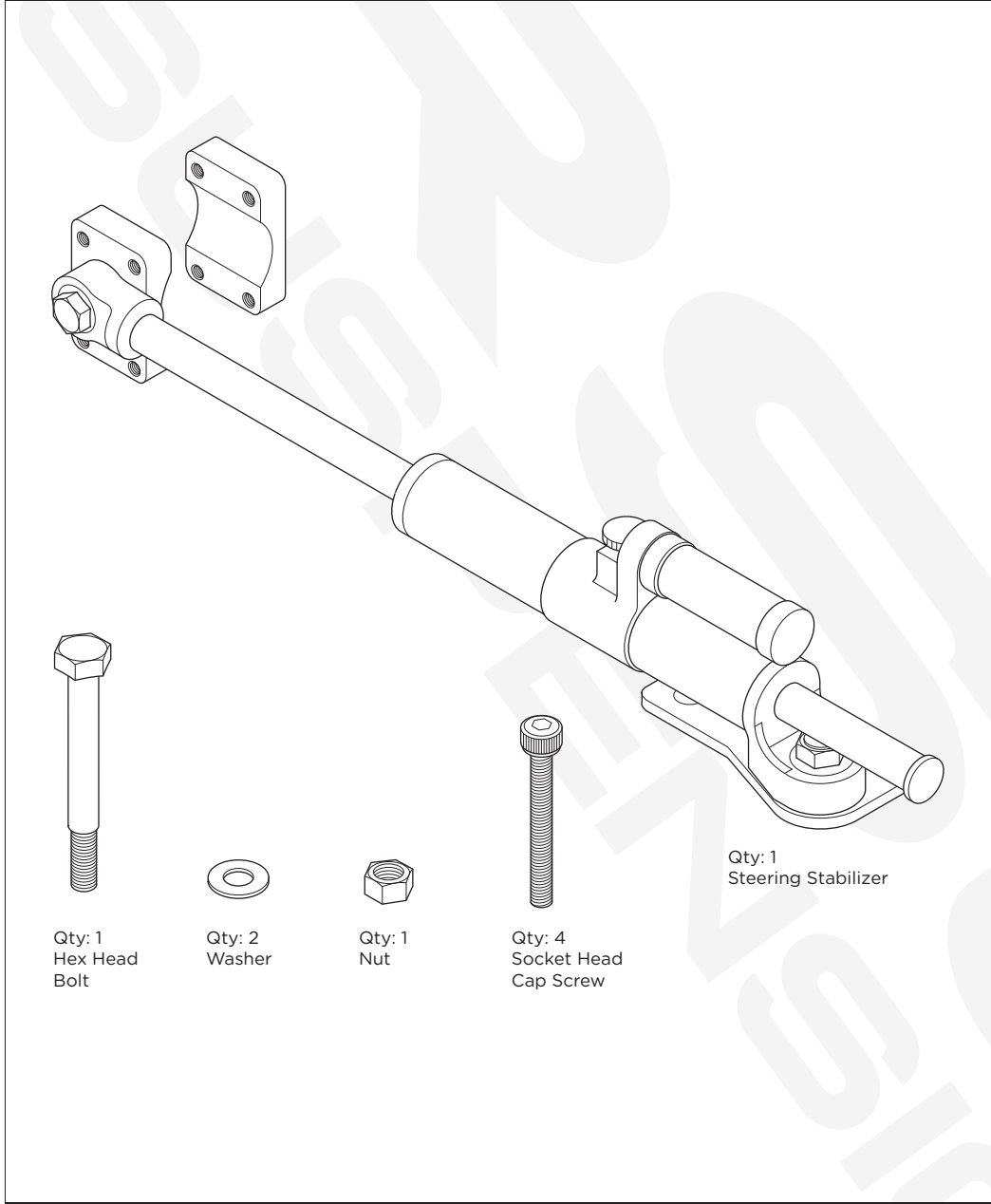


**COMPONENTS** **TOOLS REQUIRED**



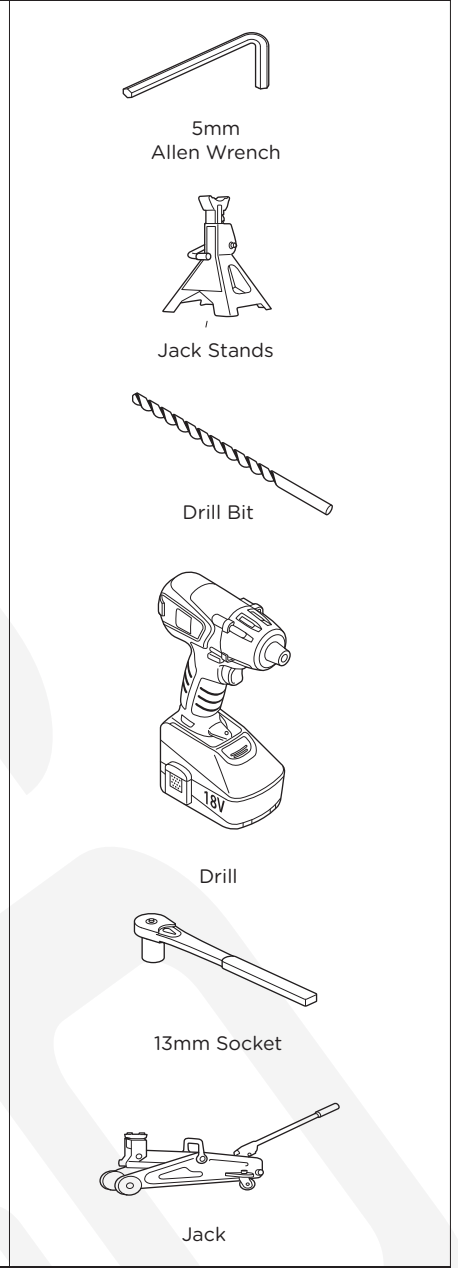
Qty: 1  
Hex Head  
Bolt

Qty: 2  
Washer

Qty: 1  
Nut

Qty: 4  
Socket Head  
Cap Screw

Qty: 1  
Steering Stabilizer



5mm  
Allen Wrench

Jack Stands

Drill Bit

Drill

13mm Socket

Jack

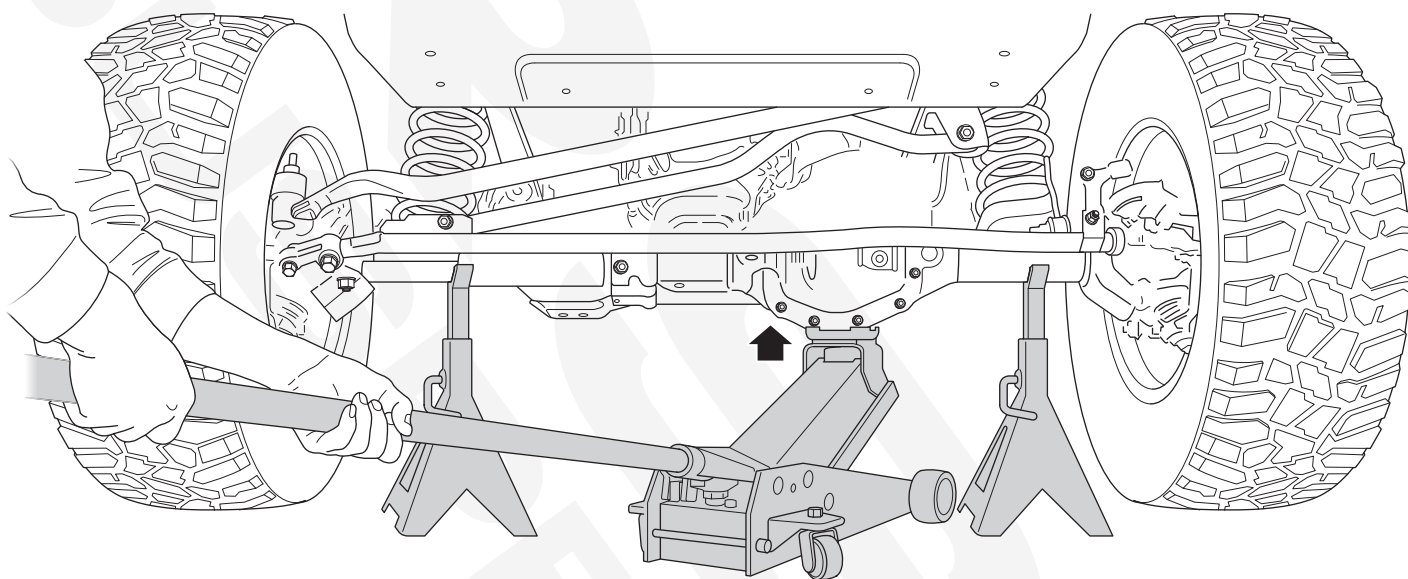
**INSTALLATION NOTES**

**NOTE:** The included Steering Stabilizer clamp will not fit on an aftermarket HD 1 5/8" Tie Rod.

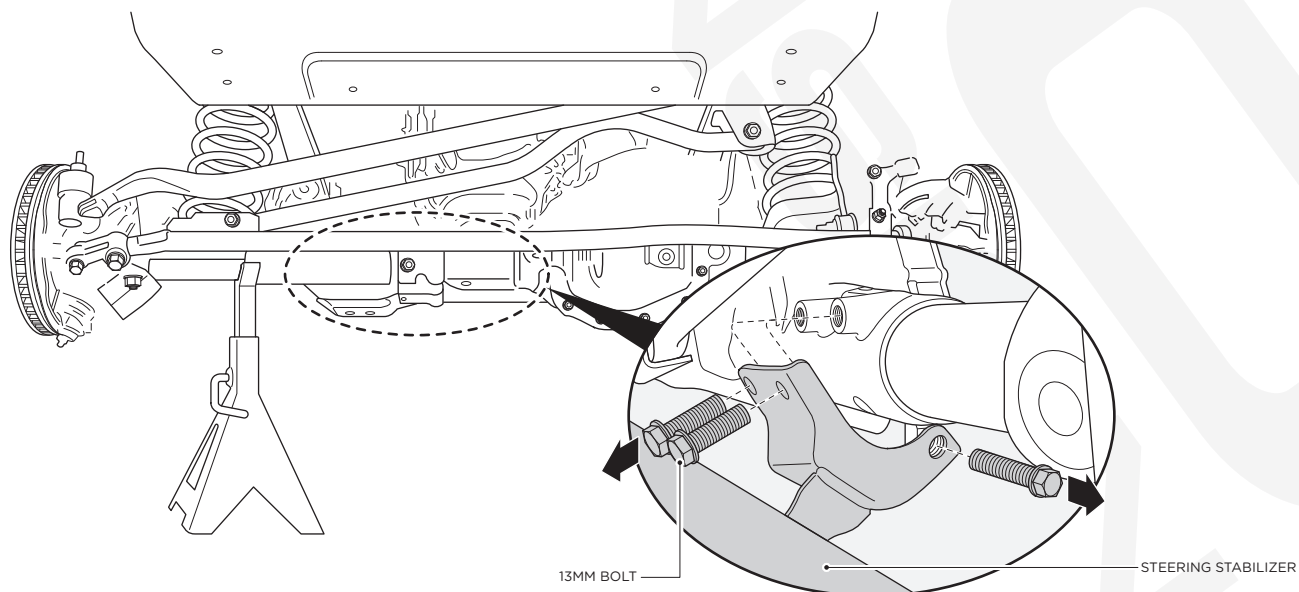
Remove all contents from the package and inspect for any damage. Also, verify that all components listed above are included before you begin installation. If anything is missing or damaged please contact us at [customerservice@raptorseries.com](mailto:customerservice@raptorseries.com)

Read through entire installation manual and installation drawings to ensure that you understand all of the components before proceeding with installation.

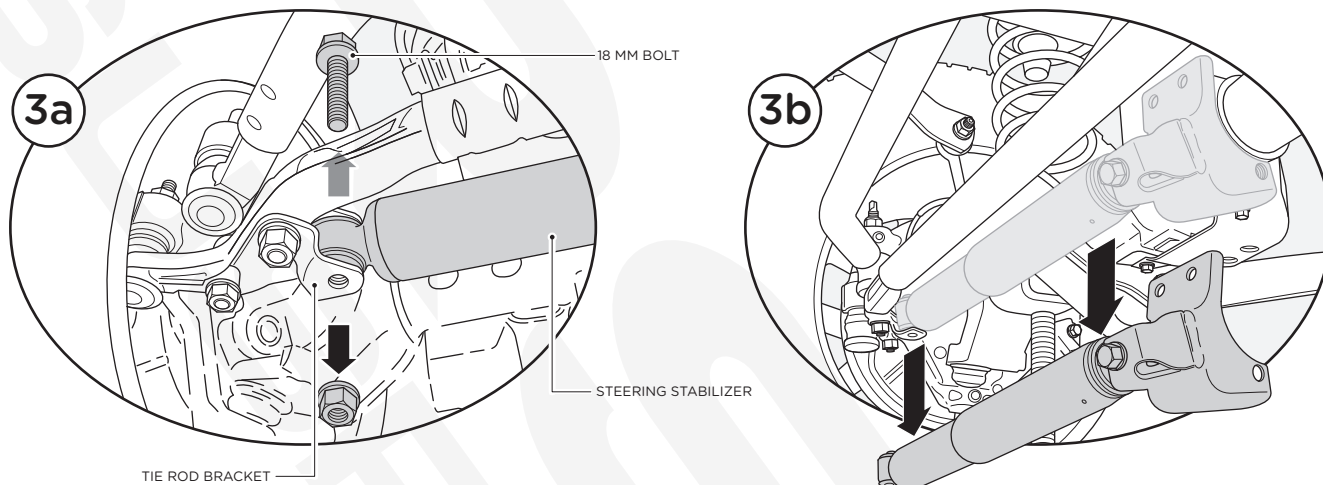
1. Chock your rear tires and then raise the front tires off the ground using a jack. Remove the front tires.



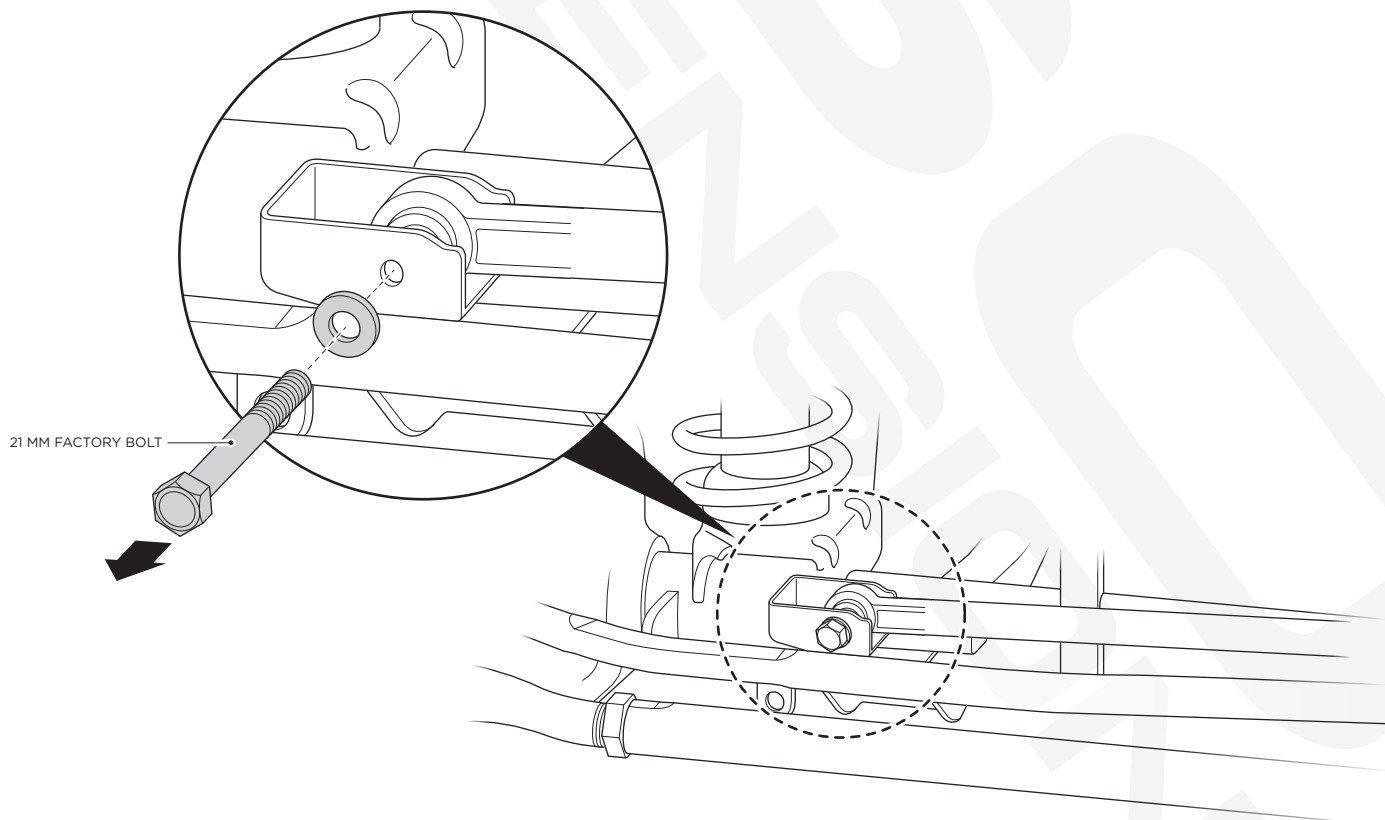
2. Remove existing steering stabilizer by first loosening the three 13mm bolts holding the steering stabilizer axle side bracket. Once the bolts are removed fully remove the bracket from the Axle.



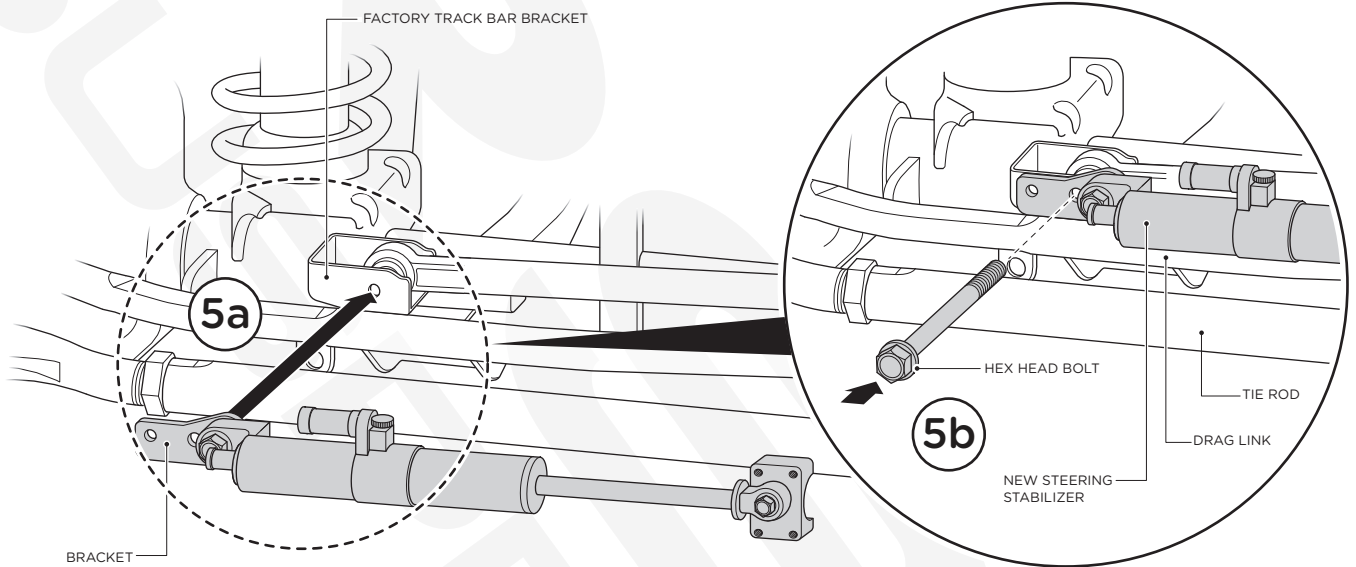
- 3.** At the other end of the existing steering stabilizer, remove the 18mm bolt holding the factory steering stabilizer to the tie rod bracket (3a). Remove steering stabilizer (3b)



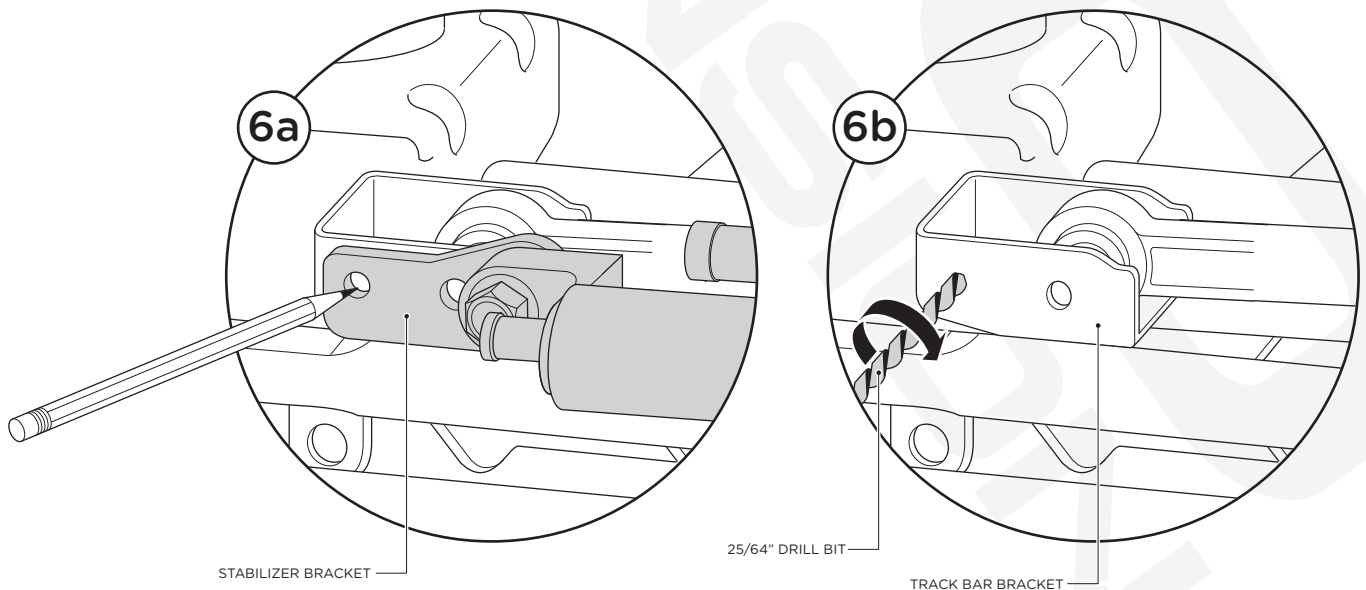
- 4.** Remove factory track bar bolt from track bar mount using a 21 mm socket. Save for installation.



- 5.** Rotate bracket attached to steering stabilizer so it extends outward, then align bracket with factory track bar bracket (5a). Secure using factory track bar bolt (5b).

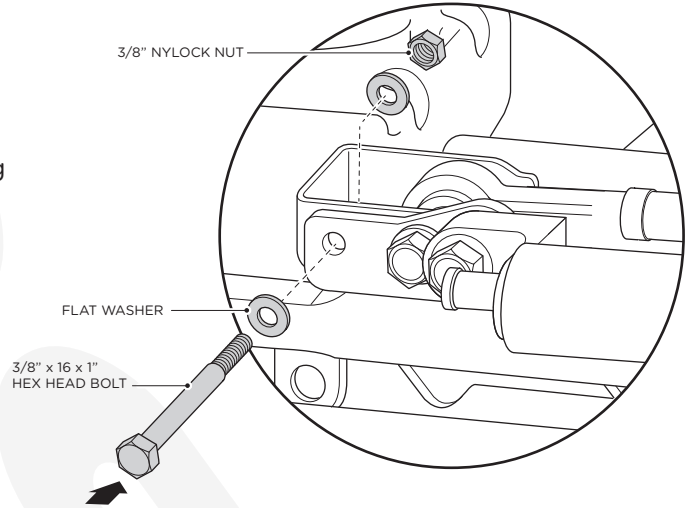


- 6.** Tighten the track bar bolt using a 3/4" socket. Use the hole on the stabilizer bracket as a template to mark where to drill a hole on the track bar bracket (6a). Remove track bar bolt and stabilizer, drill a hole in the factory track bar bracket using a 25/64" drill bit (6b).



- 7.** Install the included 3/8in x 16 x 1in Hex Head bolt, flat washers, and 3/8in Nylock Nut and torque to 35 ft-lbs using a 5/8in socket.

Torque the track bar bolt to factory specs using a 3/4in socket and Torque Wrench."



- 8.** Position Bracket End of New Steering Stabilizer onto top of Tie Rod (8a). Secure Bracket End to Tie Rod using 4 Socket Head Cap Screws (8b). Tighten Socket Head Cap Screws using an Allen wrench, making sure not to fully tighten the clamp at this point.

Once the track bar hardware is torqued to spec you may rotate the reservoir to your desired position. To achieve this simply grasp the reservoir and rotate upwards or downwards. There is no set screw to loosen or tighten. Cycle the suspension to ensure the steering stabilizer and reservoir don't make contact with any other suspension components.

Reinstall tires and wheels. Adjust your steering wheel by adjusting the collar on your new drag link until the wheels are centered while your tires are pointed straight. Then locate the screws on the Steering Stabilizer Bracket and fully tighten using an Allen Wrench.

We now recommend you get a professional alignment.

